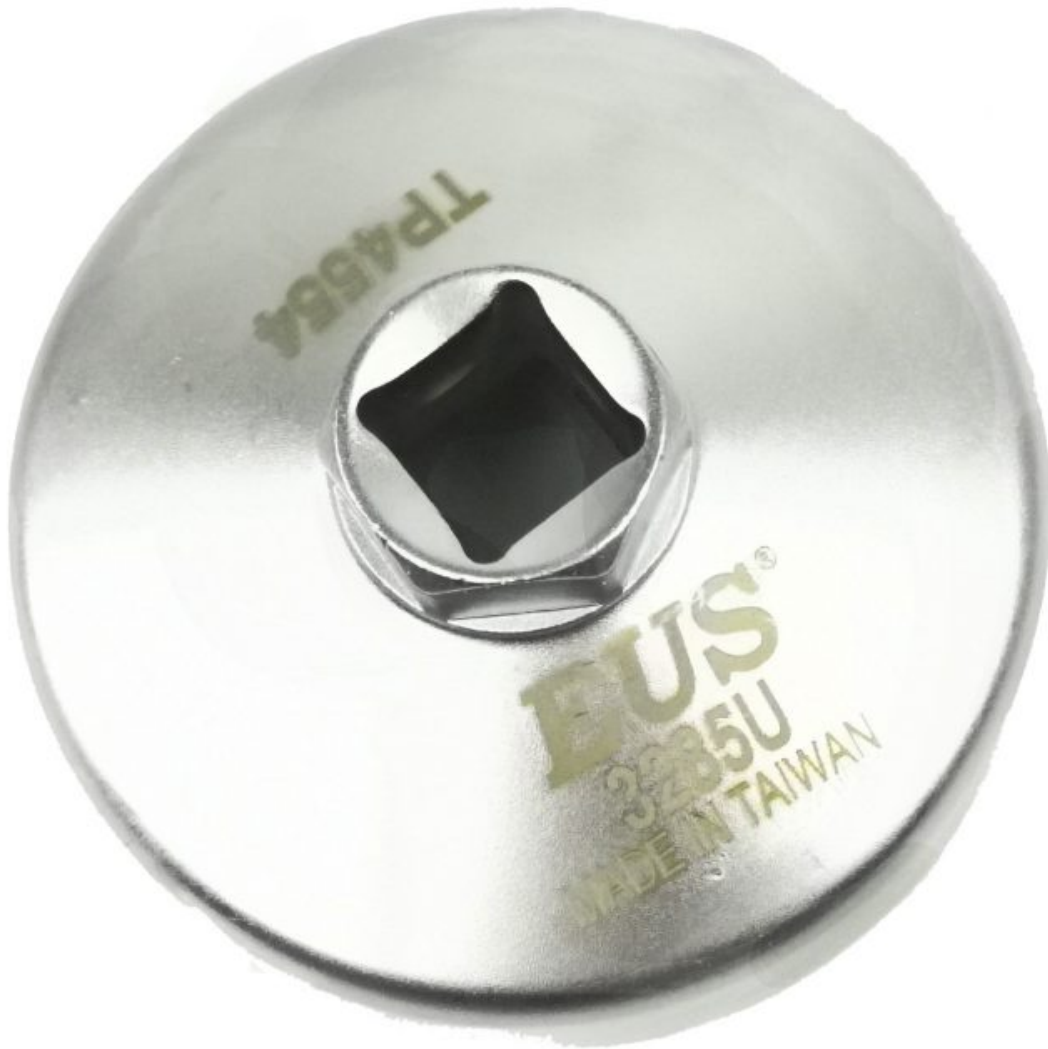


# 3285U Steel Oil Filter Wrench For Toyota and Honda



- 64.5 mm × 14 flutes × 42 mm (height)
- Use with 1/2" Dr or Wrench.
- Fits most Toyota-Lexus, Honda-Acura vehicles
- Fits both cartridge type and canister type oil filter housings
- Steel material provides high torque for removing stubborn oil filters
- Weight: 361g
- Made In Taiwan