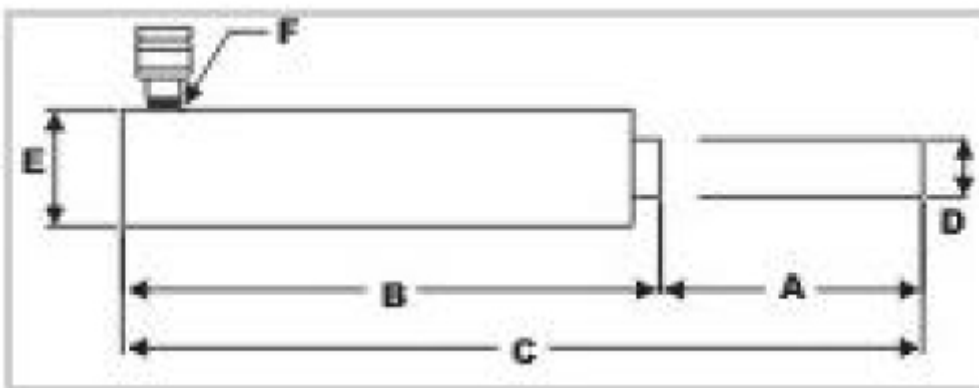


RAMS



- All models are made of Middle Carbon Steel, one piece solid steel bar machining and with heat treatment to match with the industrial requirement.
- Internal heavy duty return springs provides consistent of performance.
- Chrome-plated piston inhibits rusting, scoring and corrosion.
- To make your cylinder even more versatile, there is a wide range of accessories available for threading onto the piston rod or collar or into the cylinder base, making the cylinder a real workhorse.
- Quick connecting coupler available to all models for fast set up.



Item No	Model	Ton	A Stroke	Stroke Oil Cap (cc)	Bore Dia (mm)	B	C	Spring Return	D	E	F Oil Port Thread	Weight (kgs)
						Pressure Rating			Outside Dia (mm)			
						Retracted	Extended		Piston	Ram		
2077	RC458	4 ton	5/8"	8-1	Φ28.5	42	58	NO	25.4	-	1/4" NPT	0.8
2078	RA404	4 ton	4"	65	Φ28.5	269	370	YES	70	45	1/4" NPT	1.9
2079	RC023	2 ton	3"	38.5	Φ25.4	140	215	NO	33	33	1/4" NPT	0.8
2080	RC101	10 ton	7/16"	17.5	Φ45	43	54	NO	22.2	57	1/4" NPT	1.4
2081	RC102	10 ton	2"	81	Φ45	130	180	YES	38	57	1/4" NPT	2.3
2082	RC104	10 ton	4"	162	Φ45	180	282	YES	40	57	1/4" NPT	3.1
2083	RC106A	10 ton	6"	243	Φ45	369	522	YES	40	57	1/4" NPT	5.4
2084	RC1010	10 ton	10"	405	Φ45	463	717	YES	40	57	1/4" NPT	6.9
2085	RC1010A	10 ton	10"	405	Φ45	453	707	YES	40	57	1/4" NPT	6.8
2086	RC202	20 ton	2"	168	Φ65	150	201	YES	55	88	3/8" NPT	6.2
2087	RC205	20 ton	5"	421	Φ65	227	354	YES	55	88	3/8" NPT	8.8
2088	RC302	30 ton	2"	256	Φ75	150	201	YES	70	103	3/8" NPT	8.4
2089	RC305	30 ton	5"	638	Φ75	225	352	YES	70	103	3/8" NPT	12.3
2090	RC502	50 ton	2"	362	Φ95	165	216	YES	85	127	3/8" NPT	14.8
2091	RC505	50 ton	5"	900	Φ95	240	367	YES	85	127	3/8" NPT	21
2092	RC1002	100 ton	2-1/2"	930	Φ135	185	249	NO	105	175	3/8" NPT	31.2
2093	RC1005	100 ton	5"	1817	Φ135	250	337	NO	105	175	3/8" NPT	40.6